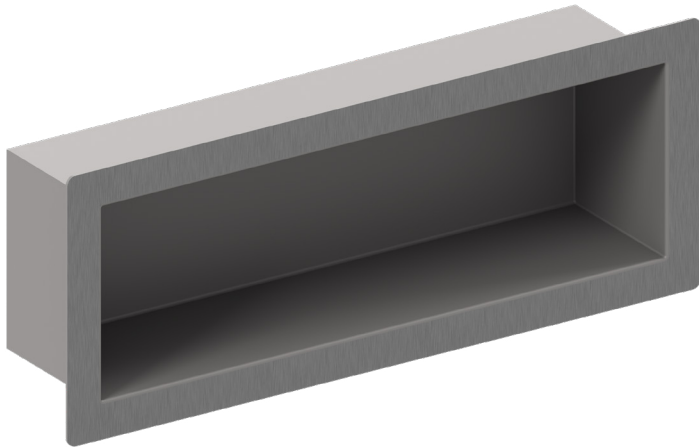
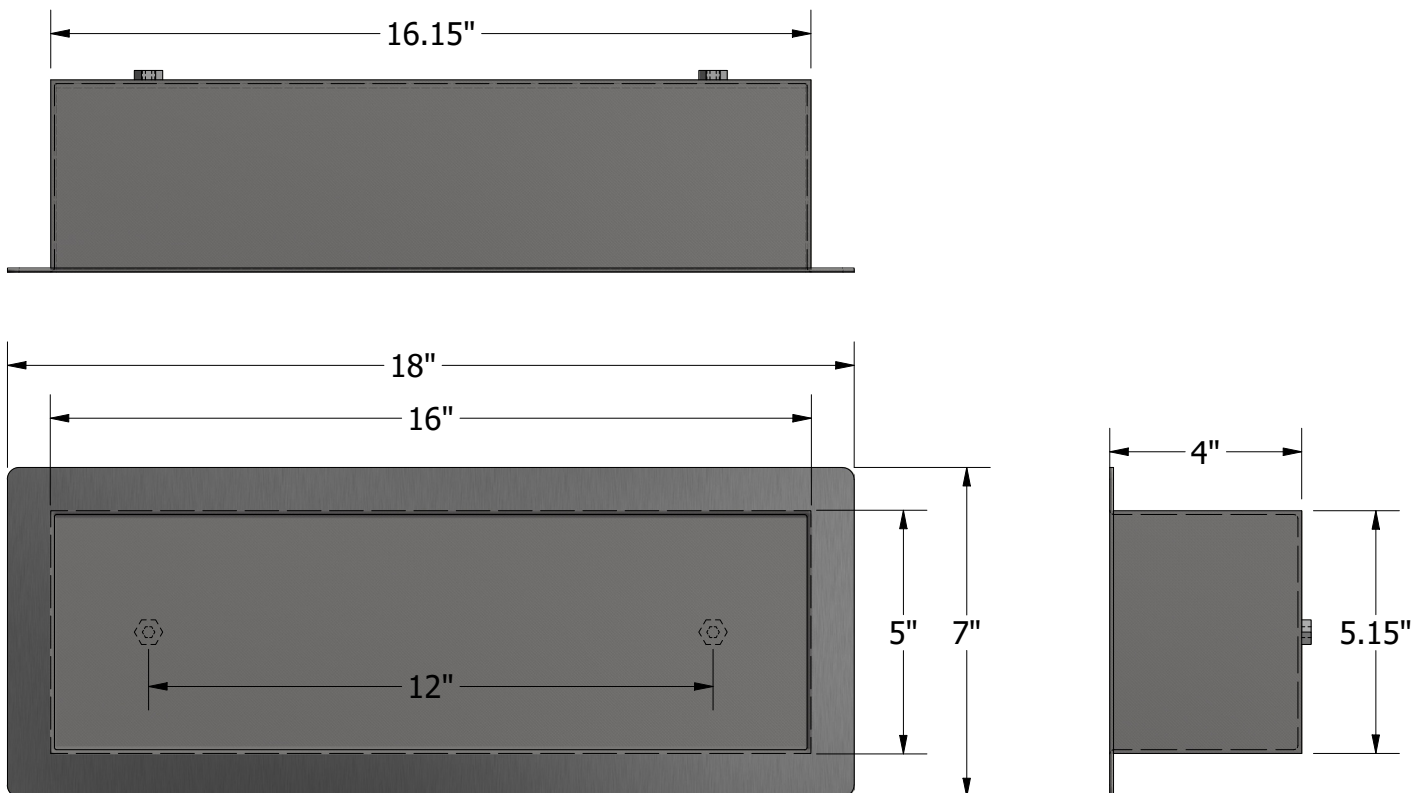


A811 REAR MOUNTED RECESSED SHELF

Item: _____



Metcraft's A811 ligature resistant shelf is fabricated from 14-gauge type 304 stainless steel. The box is mounted using two nuts welded on the rear of the shelf. Mounting this shelf requires a cutout measuring 16.15" x 5.15" and access to the rear side of the mounting wall.



WARNING: Cancer and Reproductive Harm
- www.P65Warnings.ca.gov.

Due to continuous product improvement Metcraft reserves the right to make changes in design and specifications without prior notice. All dimensions should be verified with the factory for current information.

**APPROVED FOR
MANUFACTURING**

Company: _____ Name: _____
Signature: _____ Date: _____