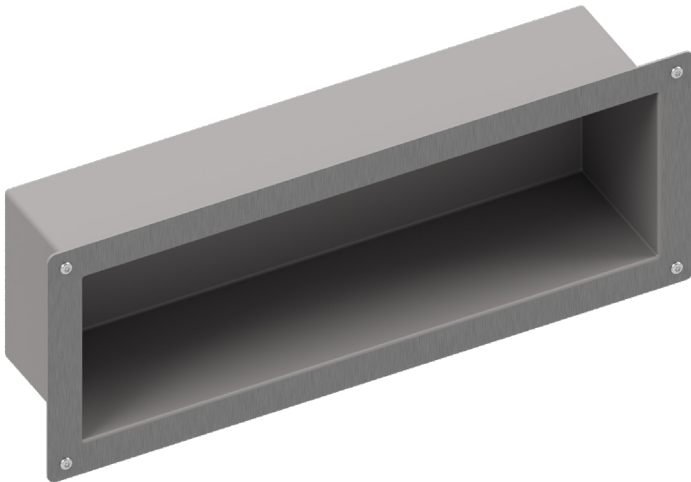
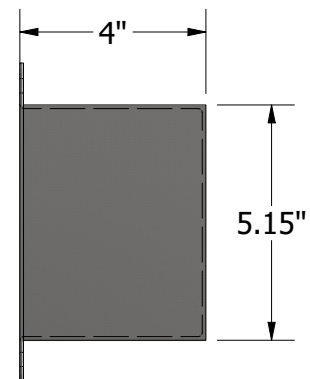
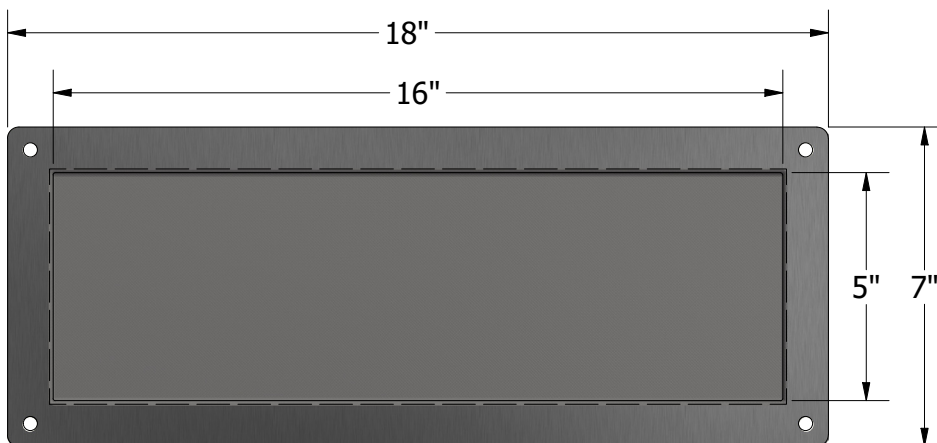
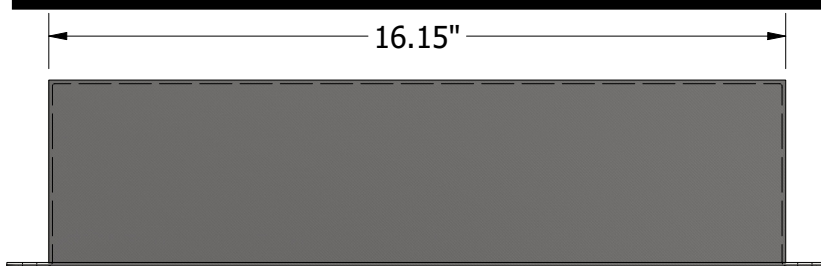


A810 FRONT MOUNTED RECESSED SHELF

Item: _____



Metcraft's A810 ligature resistant shelf is fabricated from 14-gauge type 304 stainless steel. The box is mounted using four holes in the corners on the front glange. This shelf is recessed into the wall and will require a minimum of a 4" deep cut-out, measuring 16.15" x 5.15".



WARNING: Cancer and Reproductive Harm
- www.P65Warnings.ca.gov.

Due to continuous product improvement Metcraft reserves the right to make changes in design and specifications without prior notice. All dimensions should be verified with the factory for current information.

**APPROVED FOR
MANUFACTURING**

Company: _____ Name: _____
Signature: _____ Date: _____