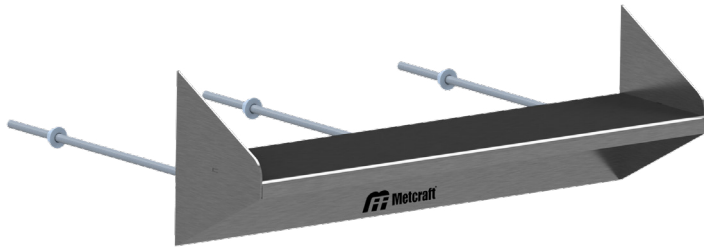
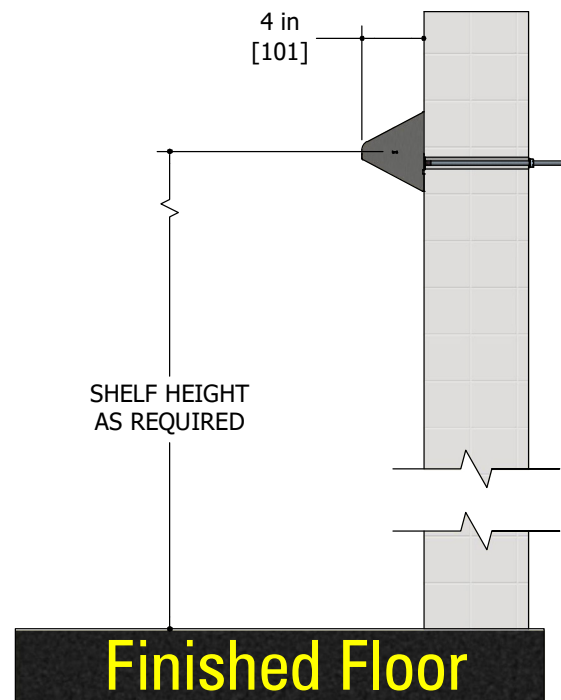
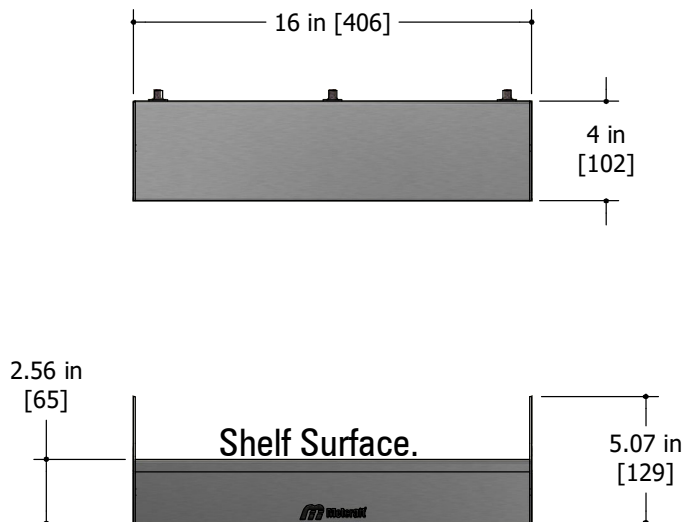


REAR MOUNTED SHELF - A731

Item: _____



Metcraft's A731 ligature resistant shelf is fabricated from 14-gauge type 304 stainless steel. The box is mounted using three nuts welded on the rear of the shelf. Mounting this shelf requires three core drilled holes to allow anchors to pass through into the chase.



WARNING: Cancer and Reproductive Harm
- www.P65Warnings.ca.gov.

Due to continuous product improvement Metcraft reserves the right to make changes in design and specifications without prior notice. All dimensions should be verified with the factory for current information.

**APPROVED FOR
MANUFACTURING**

Company: _____ Name: _____
Signature: _____ Date: _____