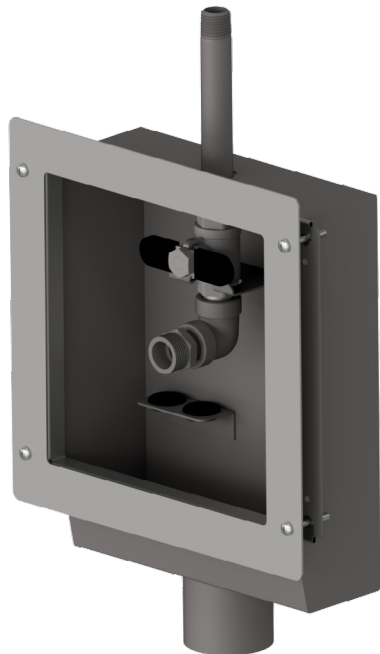


**DIALYSIS BOX - A660-316**

Item: \_\_\_\_\_

☐ **A660-316** Dialysis Box**STANDARD FEATURES**

- Fabricated using heavy gauge type 316 stainless steel.
- Single Type 316 Stainless Steel Valve.
- Wall Plate without Door.
- Water Dam.
- Drain.

Unit may be pictured with some optional features.

**WARNING:** Cancer and Reproductive Harm  
- [www.P65Warnings.ca.gov](http://www.P65Warnings.ca.gov).**► DESCRIPTION**

The A660 dialysis box is a fully recessed stainless steel box designed for use with dialysis machines which utilize solutions that aggressively attack common steel, brass, iron and other stainless steel. This box is constructed of heavy gauge, type 316, stainless steel. All box seams are continuously welded to form a one piece unit. Interior of the box is bead blasted for a clean surface. The welded hose bracket will hold two discharge hoses. The tailpiece waste connection is heavy gauge and provides primary discharge for the unit. The valve is type 316 stainless steel and securely anchored in the unit. A flushing nipple is provided for installation in the valve outlet when the lines are flushed into the waste receptor.

**► INSTALLATION**

Anchor tabs are used to secure the box to the wall. The wall flange is adjustable to cover the space between the wall and the box. The wall flange is securely anchored with Phillip head screws at each corner. The waste outlet can be connected to 2" nominal size glass or plastic drain line with a mechanical coupling.

Due to continuous product improvement Metcraft reserves the right to make changes in design and specifications without prior notice. All dimensions should be verified with the factory for current information.

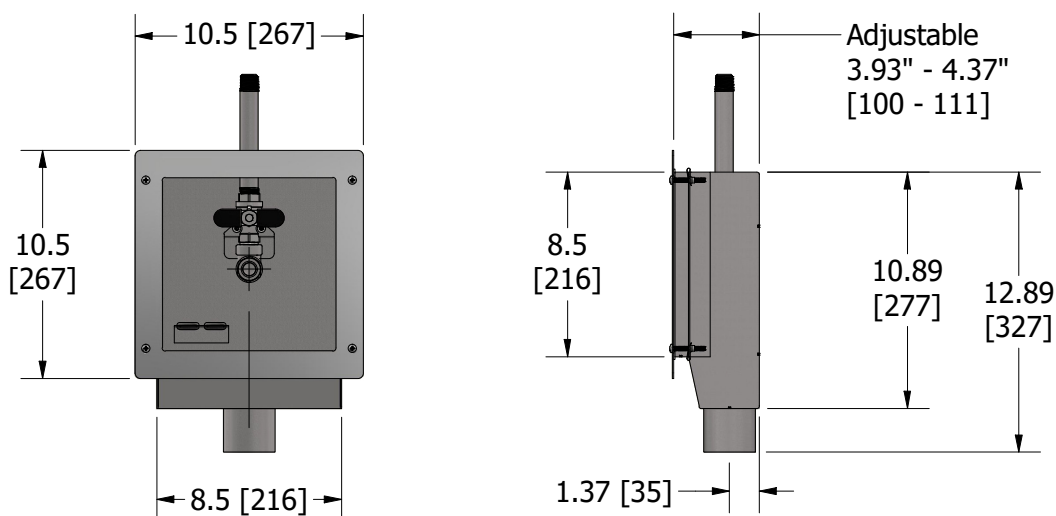
**APPROVED FOR  
MANUFACTURING**Company: \_\_\_\_\_ Name: \_\_\_\_\_  
Signature: \_\_\_\_\_ Date: \_\_\_\_\_

## OPTIONS & ACCESSORIES

-  TR Tamper resistant wall frame screws.

## DIALYSIS BOX - A660-316

**Item:**



Due to continuous product improvement Metcraft reserves the right to make changes in design and specifications without prior notice. All dimensions should be verified with the factory for current information.

**APPROVED FOR  
MANUFACTURING**

**Company:** \_\_\_\_\_ **Name:** \_\_\_\_\_

**Signature:** \_\_\_\_\_ **Date:** \_\_\_\_\_