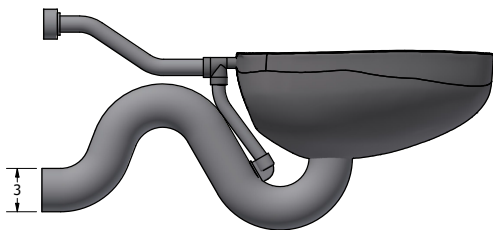
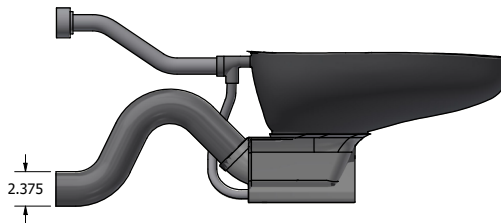
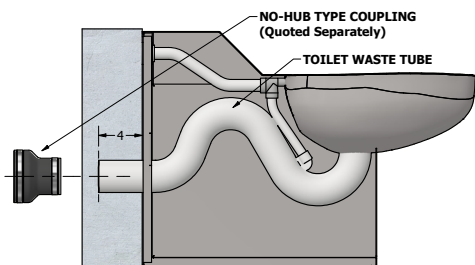
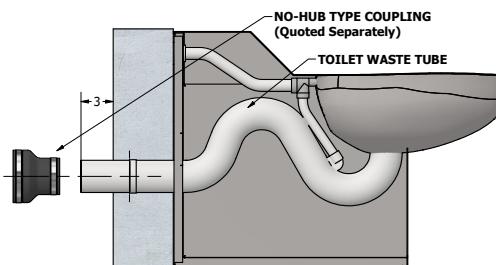
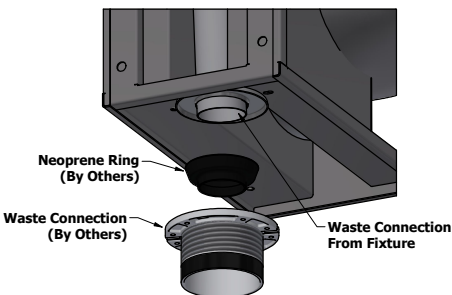
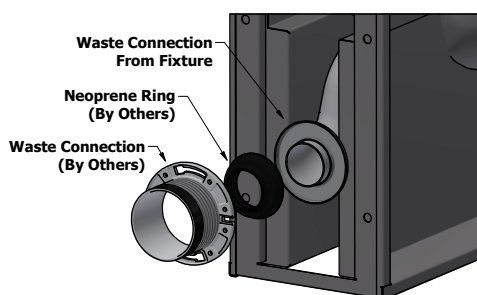
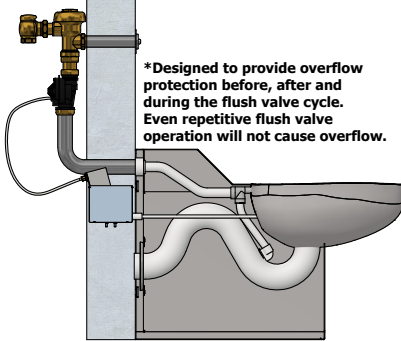
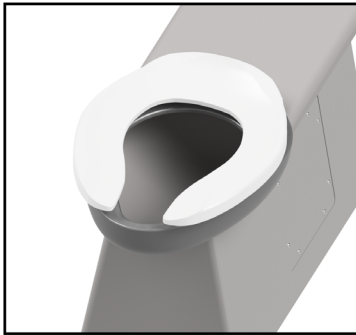
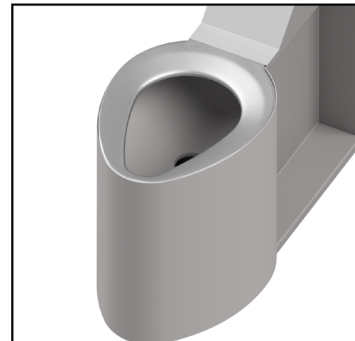
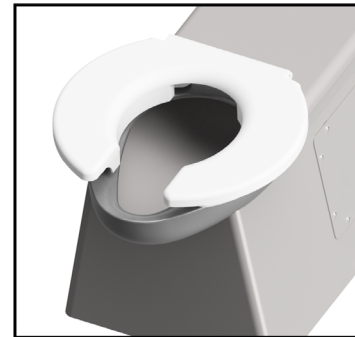


Toilet Flush Type

1.6 3" Waste Connection

1.28 (HET) 2-3/8" Waste Connection

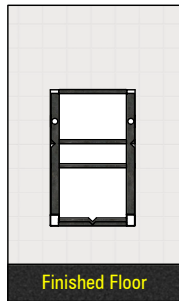
Toilet Waste Options

PE Plain end waste - 4" off fixture.

PL Plain end waste - 3" into chase.

GW Gasket waste outlet. (Floor)

GW Gasket waste outlet. (Wall)

Product Options

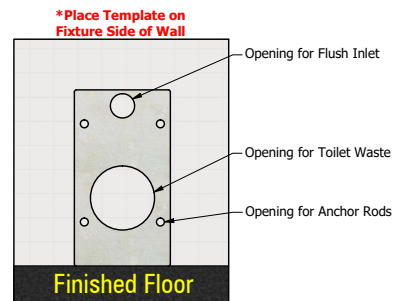
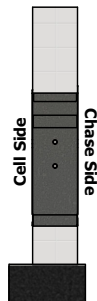
*Designed to provide overflow protection before, after and during the flush valve cycle. Even repetitive flush valve operation will not cause overflow.

AFH Hydraulic Anti-Flood Valve**MS** High Polished Seat**HS** Hinged Seat**MA** Ligature Resistant Skirt**PCC** Powder Coat - Anti-microbial White**HS-BAR** Hinged Plastic Bariatric Toilet Seat

Optional Accessories

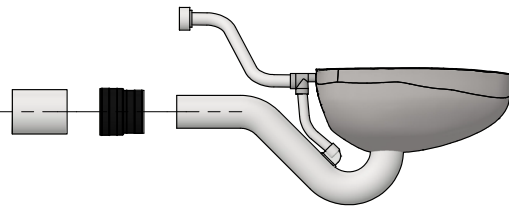


A120 Security Frame (Wall Sleeve/Can)



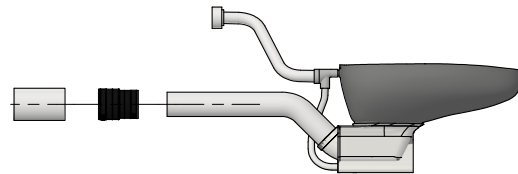
A168 Metal Template for Wall Openings

No-Hub Connectors for 1.6gpf Units

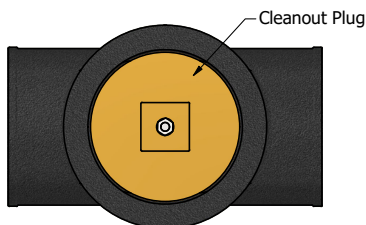


A210-1 3" s/s to 4" CI No-hub Connector
A210-3 3" s/s to 3" CI No-hub Connector

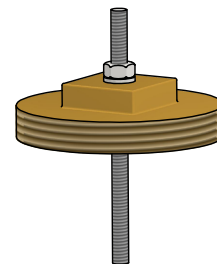
No-Hub Connectors for 1.28gpf Units



A210-8 2-3/8" s/s to 4" CI No-hub Connector
A210-9 2-3/8" s/s to 3" CI No-hub Connector



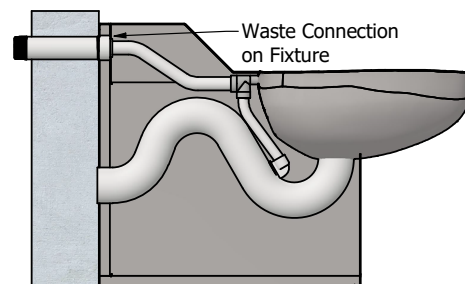
A215-3 3" No-hub Test Tee
A215-4 4" No-hub Test Tee



A216-3 Pinned Cleanout Plug 3"
A216-4 Pinned Cleanout Plug 4"



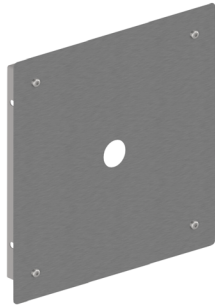
A216-3H Pinned Cleanout Plug 3" w/ Hook
A216-4H Pinned Cleanout Plug 4" w/ Hook



A247 Flush Valve Thru Wall Connector

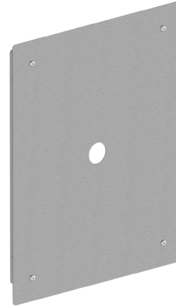
Optional Accessories (Continued)

Available with or without hole



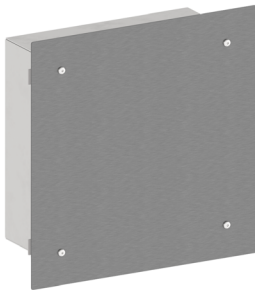
A610 Flush Valve Access Panel

Available with or without hole



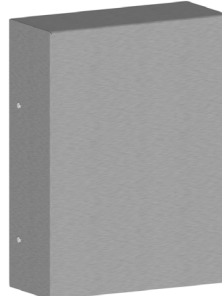
A611 Flush Valve Access Panel

Available with or without hole



A620 Recessed Flush Valve Cover

Available with or without hole



A615 Flat Top Flush Valve Cover

Available with or without hole



A615 Sloped Top Ligature Resistant
Flush Valve Cover