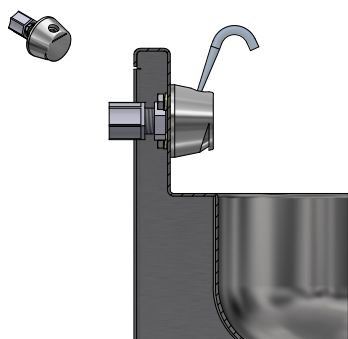
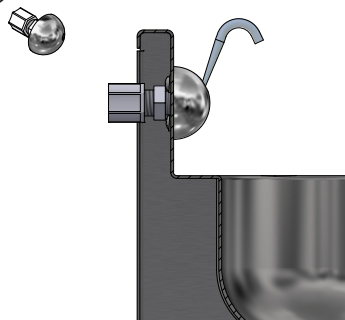


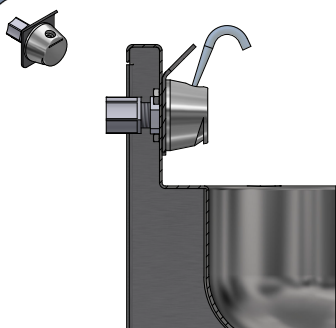
Spouts



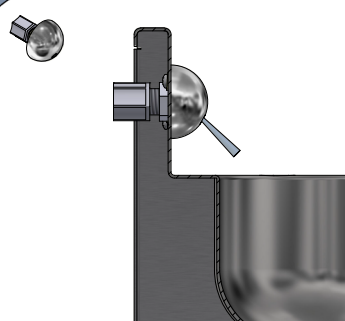
B1 Security Bubbler with Upward Stream



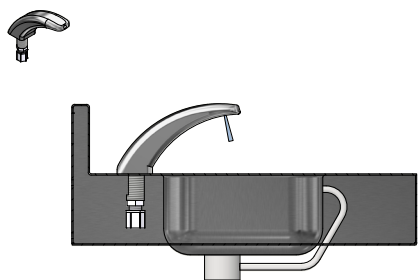
B1H Ligature Resistant Bubbler with Upward Stream



B2 Security Bubbler with Mouthguard & Upward Stream

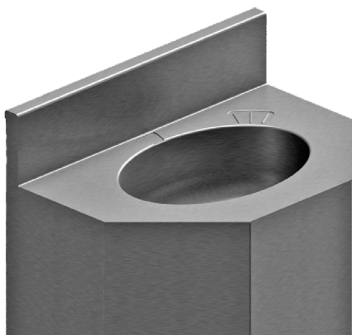


B3H Ligature Resistant Filler with Downward Stream



B5 Deck Mounted Filler Spout with Downward Stream

Hand Basins

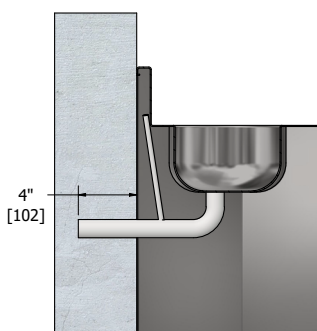


OB Oval Basin.

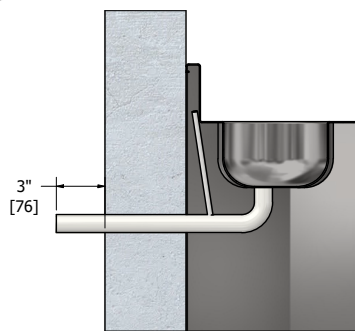


RB Rectangular Basin.

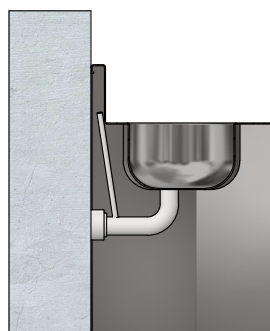
Lavatory Waste



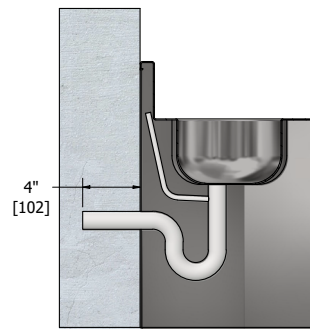
EPE Elbow Waste Plain End



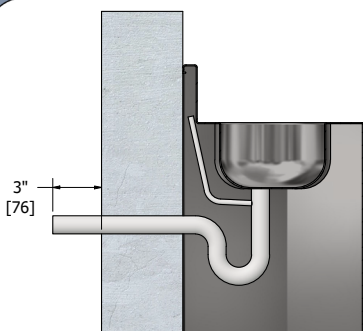
EPL Elbow Waste Plain End
Through the Wall



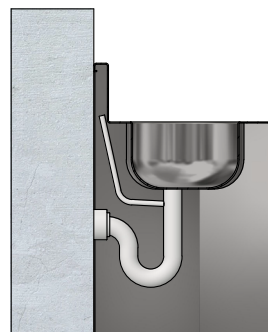
ET2 Elbow Waste



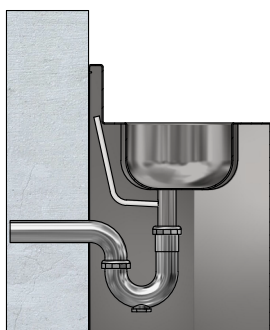
PPE P-Trap Plain End

Lavatory Waste (Continued)


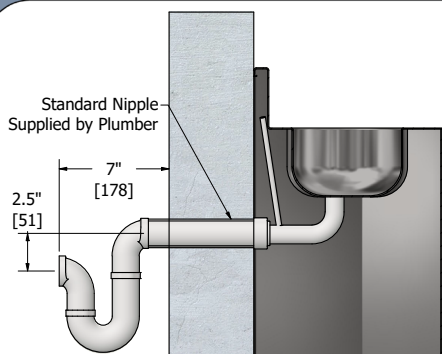
PPL P-Trap Plain End Through the Wall



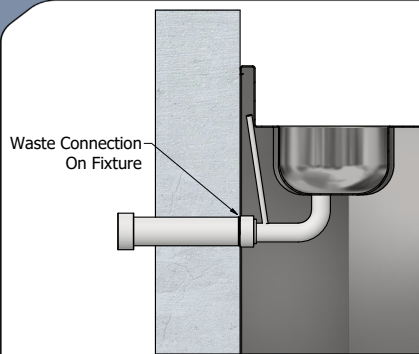
PT2 P-Trap



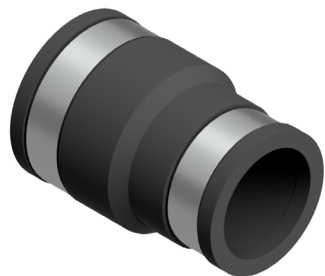
SJP Slip Joint P-Trap

Lavatory Waste Extensions


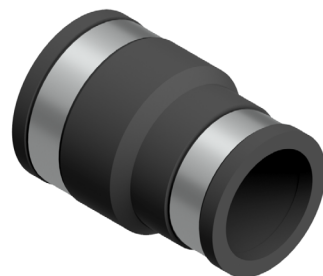
A235 Trap Assembly



A240 Waste Extension 1-1/2"

Lavatory Waste Adapter Couplings

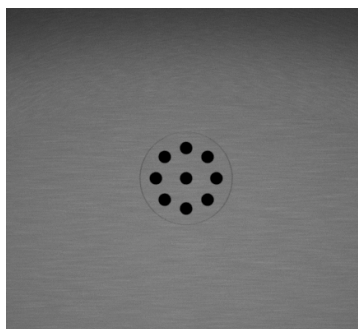
A205-1 Lavatory waste coupling 1-1/4" (32mm) s/s to 1-1/2" (38mm)



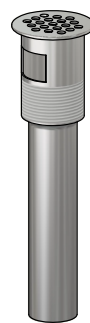
A205-2 Lavatory waste coupling 1-1/4" (32mm) s/s to 1-1/2" (38mm) PL/STL



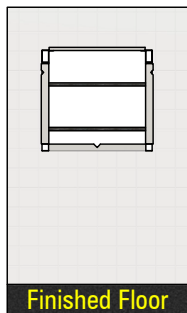
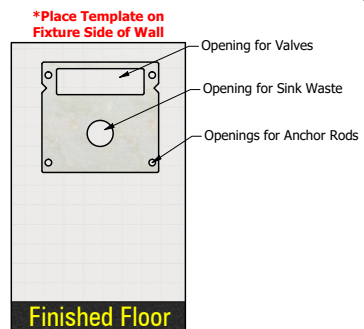
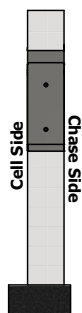
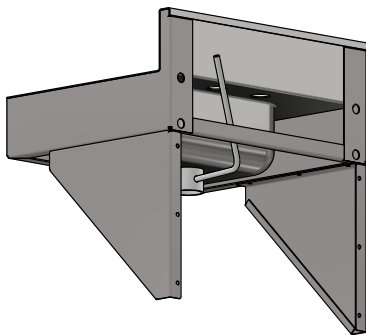
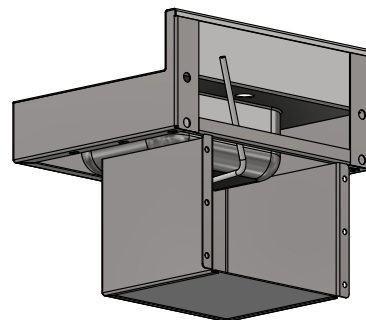
A205-3 Lavatory waste coupling 1-1/4" (32mm) s/s to 2" (51mm) CI

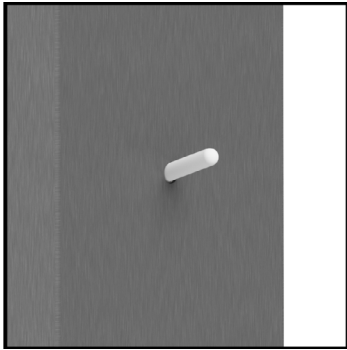
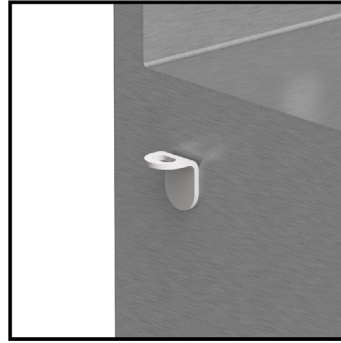
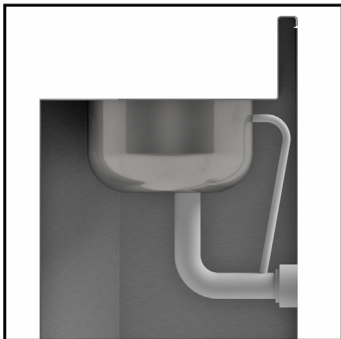
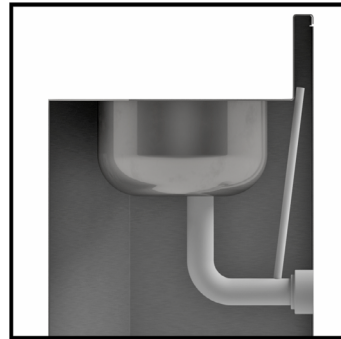
Drains

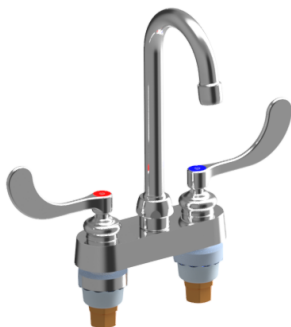
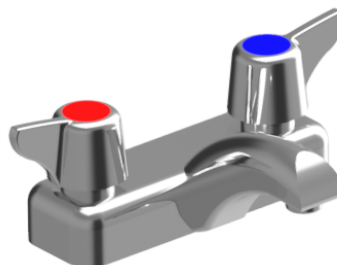
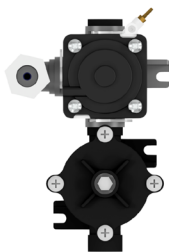
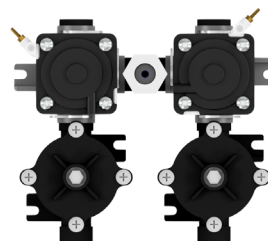
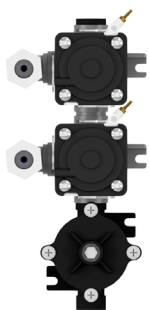
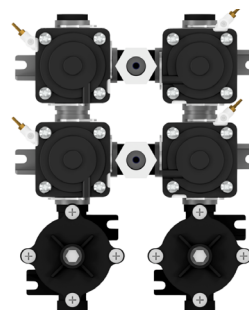
FD Multi-hole Fast Drain



A270 Grid Drain with Tailpiece

Drains (Continued)**A261** Grid Drain with Elbow**Options/Accessories****A120** Security Frame (Wall Sleeve/Can)**A168** Metal Template for Wall Openings**A775** Angle Braces**A780** Waste Enclosure

Options/Accessories (Continued)**HT** Towel Hook**TB** Toothbrush Holder**OF** Overflow Vent**AV** Air Vent**PCC** Powder-coat - Anti-microbial White

Valve Assemblies (Continued)**A306** Faucet with Gooseneck**A307** Faucet Blade Style Handles**A311** Single Temperature, Single Fixture Valve**A312** Dual Temperature, Single Fixture Valve**A313** Single Temperature, Manifold Fixture Valve**A314** Dual Temperature, Manifold Fixture Valve