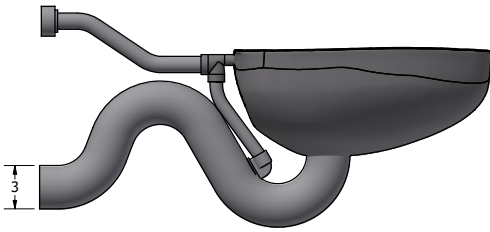
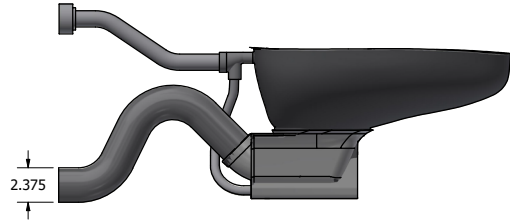


Toilet Flush Type

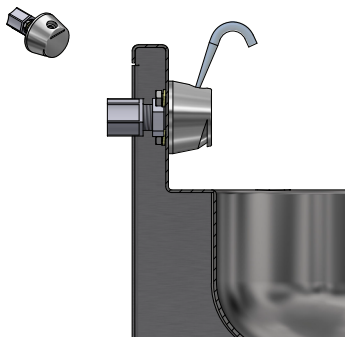


1.6 3" Waste Connection

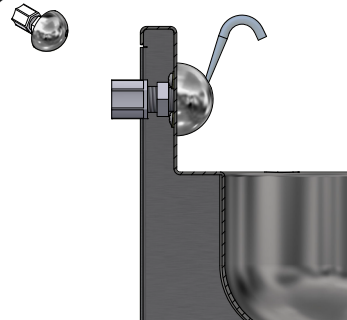


1.28 (HET) 2-3/8" Waste Connection

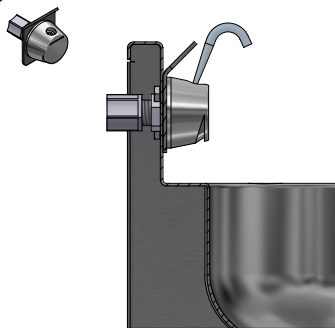
Spouts



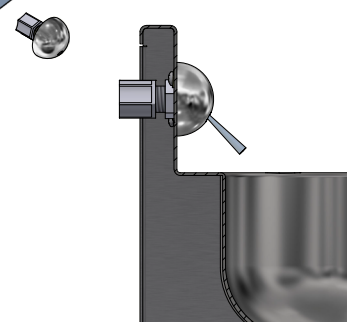
B1 Security Bubbler with Upward Stream



B1H Ligature Resistant Bubbler with Upward Stream

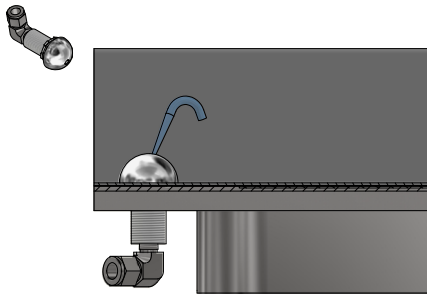


B2 Security Bubbler with Mouthguard & Upward Stream



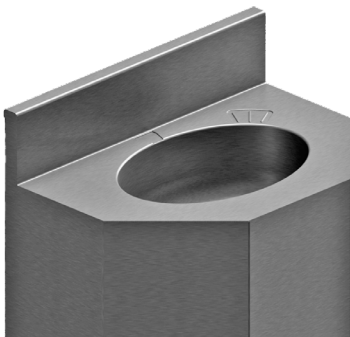
B3H Ligature Resistant Filler with Downward Stream

Spouts (Continued)



B5H Ligature Resistant Deck Mounted
Bubbler with Upward Stream

Hand Basins

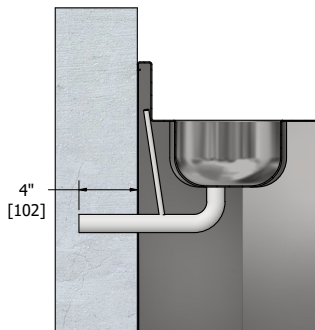


OB Oval Basin.

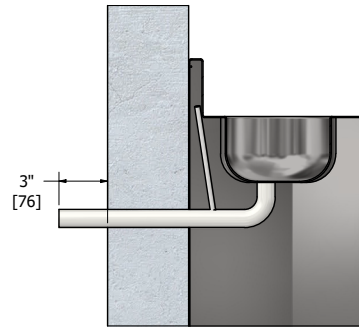


RB Rectangular Basin.

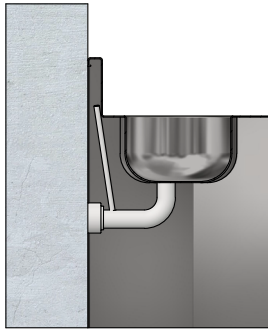
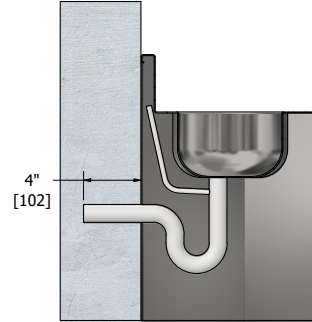
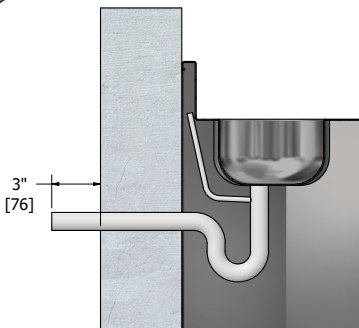
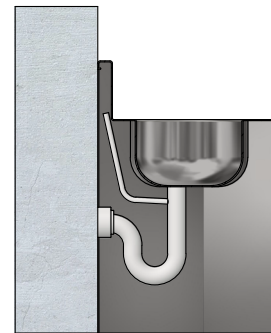
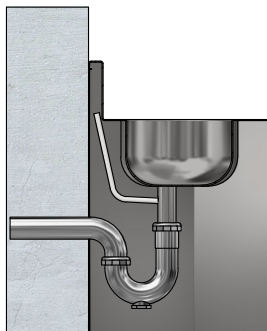
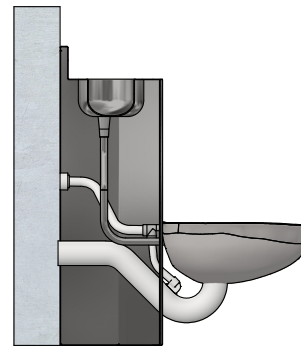
Lavatory Waste



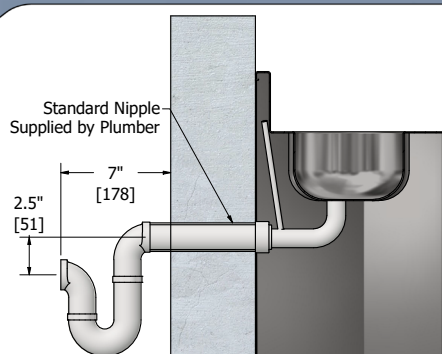
EPE Elbow Waste Plain End



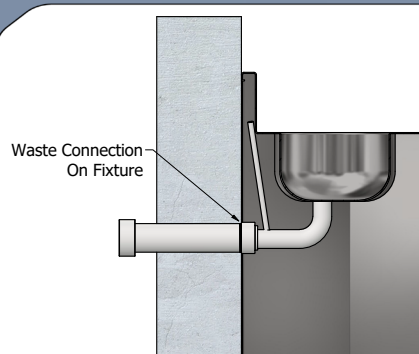
EPL Elbow Waste Plain End
Through the Wall

Lavatory Waste (Continued)**ET2** Elbow Waste**PPE** P-Trap Plain End**PPL** P-Trap Plain End
Through the Wall**PT2** P-Trap**SJP** Slip Joint P-Trap**CWO** Combined Waste

Lavatory Waste Extensions

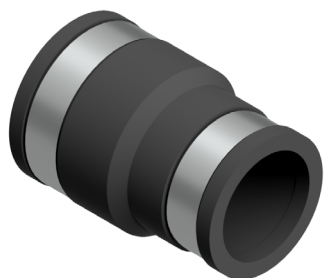


A235 Trap Assembly

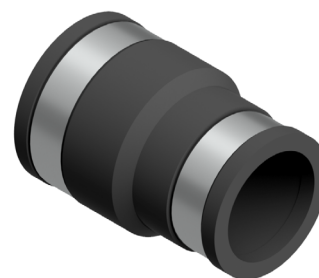


A240 Waste Extension 1-1/2"

Lavatory Waste Adapter Couplings



A205-1 Lavatory waste coupling 1-1/4" (32mm) s/s to 1-1/2" (38mm)

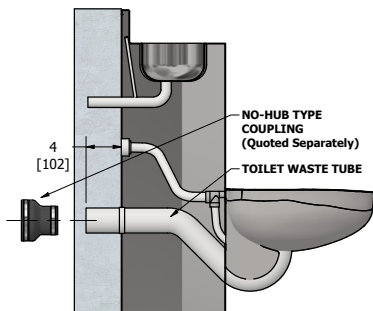


A205-2 Lavatory waste coupling 1-1/4" (32mm) s/s to 1-1/2" (38mm) PL/STL

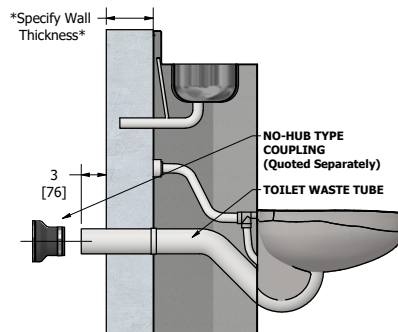


A205-3 Lavatory waste coupling 1-1/4" (32mm) s/s to 2" (51mm) CI

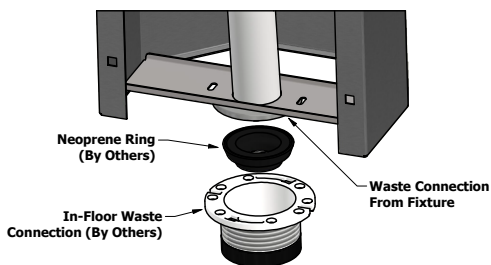
Toilet Waste Options



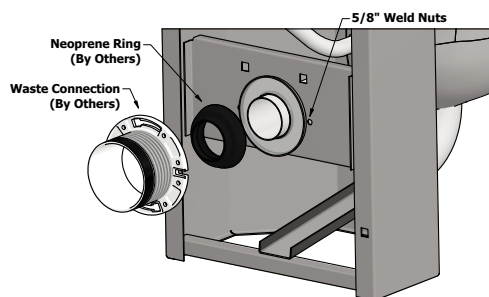
PE Plain end waste - 4" off fixture



PL Plain end waste - 3" into chase

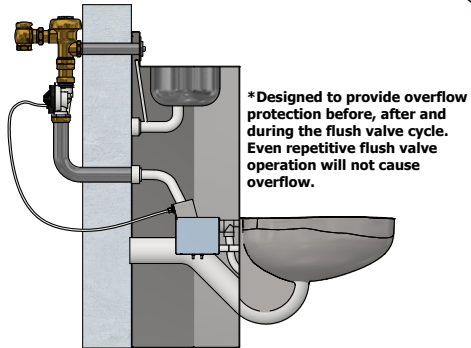


GW Gasket Waste Outlet (Floor)



GW Gasket Waste Outlet (Wall)

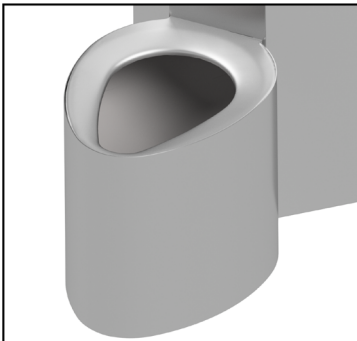
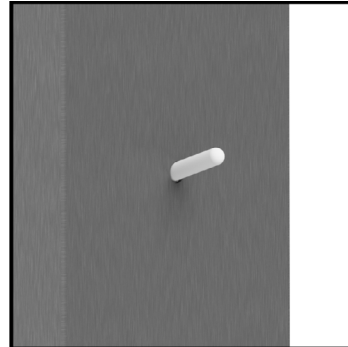
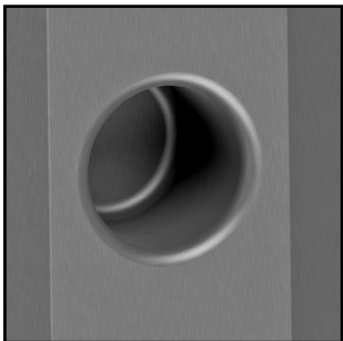
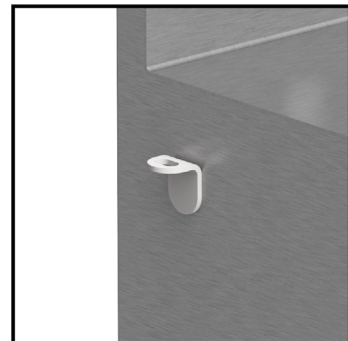
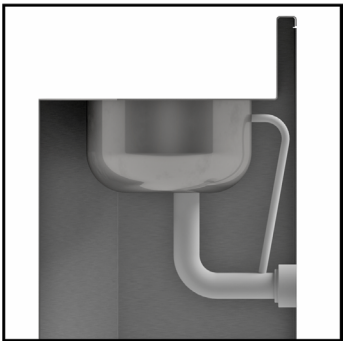
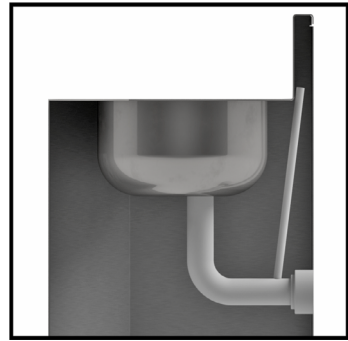
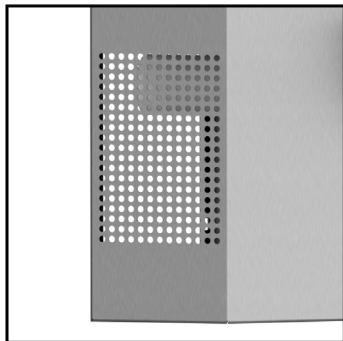
Product Options



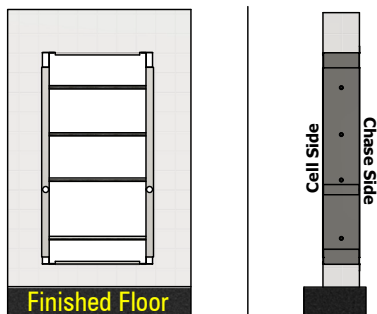
AFH Hydraulic Anti-Flood Valve



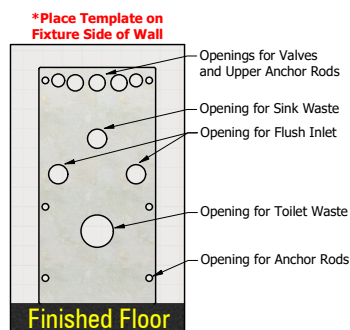
MS High Polished Seat

Product Options (Continued)**MA** Ligature Resistant Skirt**HT** Towel Hook**PH** Recessed Tissue Holder**TB** Toothbrush Holder**OF** Overflow Vent**AV** Air Vent**VG** Vent Grille

Options/Accessories

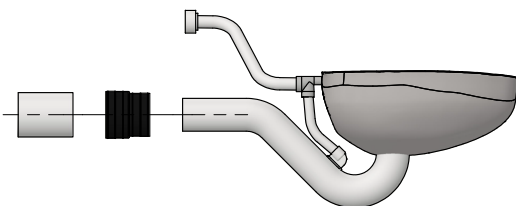


A120 Security Frame (Wall Sleeve/Can)



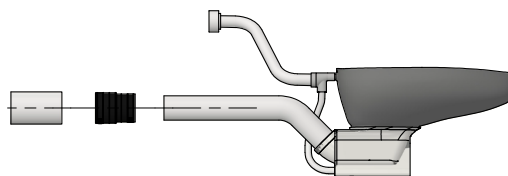
A168 Metal Template for Wall Openings

No-Hub Connectors for 1.6gpf Units

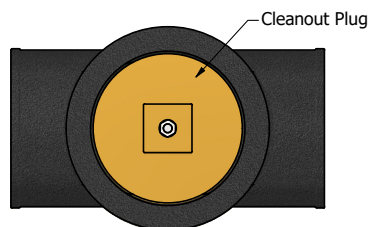


A210-1 3" s/s to 4" CI No-hub Connector
A210-3 3" s/s to 3" CI No-hub Connector

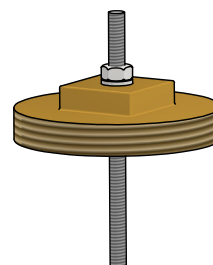
No-Hub Connectors for 1.28gpf Units



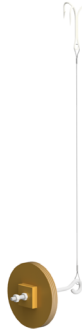
A210-8 2-3/8" s/s to 4" CI No-hub Connector
A210-9 2-3/8" s/s to 3" CI No-hub Connector



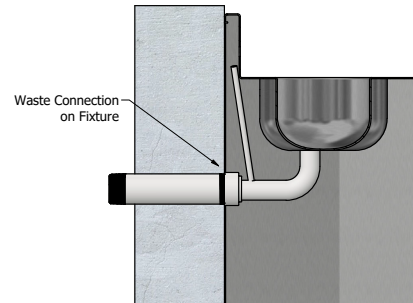
A215-3 3" No-hub Test Tee
A215-4 4" No-hub Test Tee



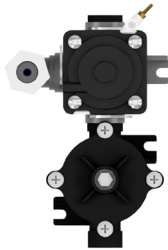
A216-3 Pinned Cleanout Plug 3"
A216-4 Pinned Cleanout Plug 4"

Options/Accessories (Continued)


A216-3H Pinned Cleanout Plug 3" w/ Hook
A216-4H Pinned Cleanout Plug 4" w/ Hook



A247 Flush Valve Thru Wall Connector

Valve Assemblies


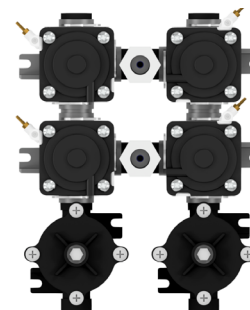
A311 Single Temperature, Single
Fixture Valve



A312 Dual Temperature, Single
Fixture Valve



A313 Single Temperature, Manifold
Fixture Valve



A314 Dual Temperature, Manifold
Fixture Valve