



Metcraft[®]

Industries, Inc.



**Park & Rec.
Products**

Metcraft Park & Rec. Products

3-Bolt Carrier Mounted Model



4-Bolt Carrier Mounted Model



Certified by
QAI Laboratories



Product Description

These units are fabricated using 14 gauge type 304 stainless steel with the option for a hinged seat available on all models.

Available Models

Carrier Models

- 4610 (Shown) - 3 Bolt
- 4615 - 3 Bolt
- 4660 - 4 Bolt
- 4665 - 4 Bolt

Chase Mounted Models

- 4110 - Accessible Chase Req.
- 4115 - Accessible Chase Req.

Additional Models Available
On Our Website



Wall Outlet Toilets

Standard Features and Options:

- *Hinged Seat (Optional):* The hinged seat option adds a plastic seat to the fixture to complete the design.
- *Powder Coat (Optional):* This option combines the quality and durability of our fixture with a powder coat finish to give the more traditional appearance of vitreous china.

2901 NE Hagan Road - Lee's Summit, MO 64064
Phone: 816-554-0300 ❖ **Website:** www.metcraftindustries.com
LinkedIn: [LinkedIn.Metcraft.Pro](https://www.linkedin.com/company/metcraft-pro) ❖ **YouTube:** [YouTube.Metcraft.Pro](https://www.youtube.com/channel/UCMetcraftPro)



Metcraft Park & Rec. Products



Product Description

Our commercial Pit Toilets are fabricated using 14 gauge type 304 stainless steel with a powder coated finish available on all models. This optional finish combines the durability of stainless steel with the traditional appearance of vitreous china.

Available Models

Waterless Pit Toilet

- 4300

(Optional) Frame available

Pit Toilets

Standard Features and Options:

- *12 Gauge Mounting Flange:* The heavy duty mounting flange provides a strong mounting point to the floor. This also pairs perfectly with our mounting frame for new facilities.
- *Hinged Seat:* The hinged seat standard feature adds a plastic seat with a lid to close off the pit when the toilet is not in use.
- *Powder Coat (Optional):* This option combines the quality design and durability of our fixture with a powder coat finish to give the more traditional appearance of vitreous china.



Metcraft Park & Rec. Products



Product Description

Our pint urinal is designed to accommodate both standard .5 GPF flush valves for urinals and the new .125 GPF high efficiency flush valves for those needing additional water conservation solutions.

Available Models

Rear Supply Models

- 7600

Top Supply Models

- 7605 (Shown)

Additional Models Available
On Our Website

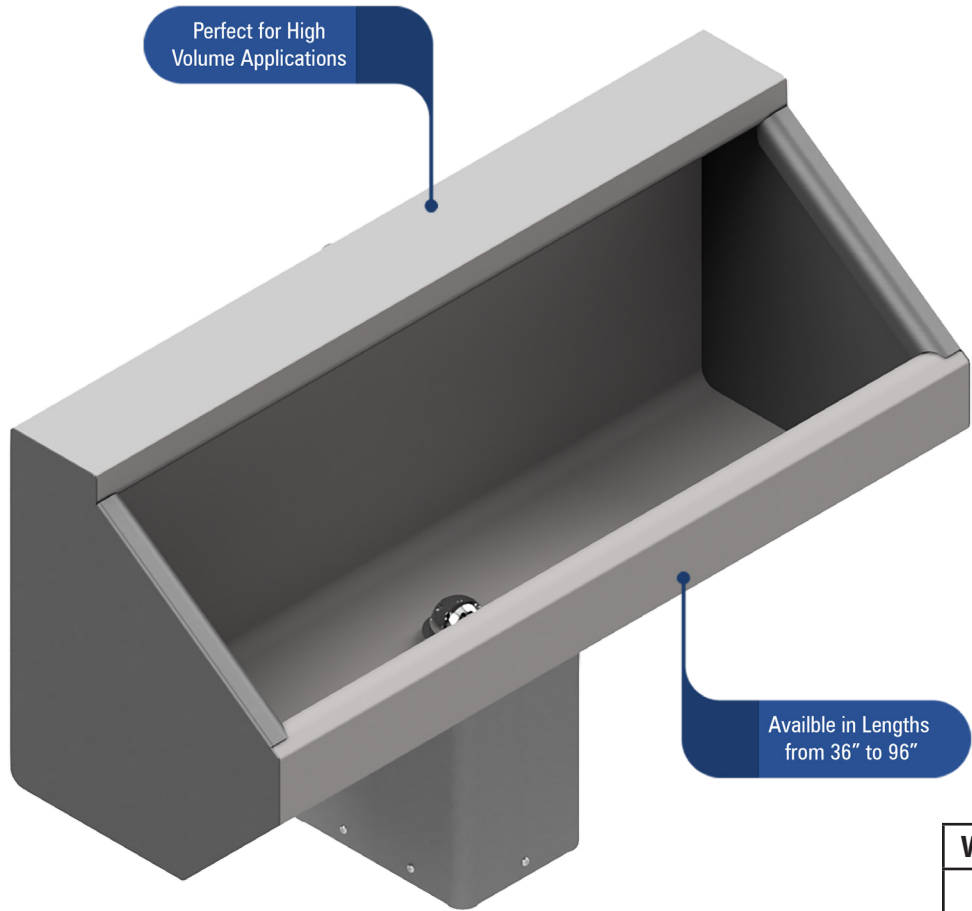
Pint Urinals

Our commercial urinal fixtures have these standard features.

- *Open Bottom:* Allows easy access for maintenance crews to install and maintain the drain connection and access shut-offs for the water inlet connections.
- *Cone Design:* Allows for a compact design while maximizing the size of the opening.
- *Enclosed Mounting Frame:* Provides a frame for secure mounting while keeping the design simple with only four visible mounting screws.
- *Powder Coat (Optional):* This option combines the quality design and durability of our fixture with a powder coat finish to give the more traditional appearance of vitreous china.



Metcraft Park & Rec. Products



Perfect for High Volume Applications

Available in Lengths from 36" to 96"

Product Description

Our trough urinals are available in a wide array of models. The 7140 and 7150 series are designed for facilities with an accessible chase, while the 7640 and 7650 series are designed to be front mounted for facilities without an accessible chase. We also offer top supply and back supply models for all sizes. We offer these urinals in standard lengths from 36" to 96".

Available Models

Width	Chase Mounted	Front Mounted
36"	7140/7150	7640/7650
48"	7141/7151	7641/7651
60"	7142/7152	7642/7652
72"	7143/7153	7643/7653
96"	7144/7154	7644/7654

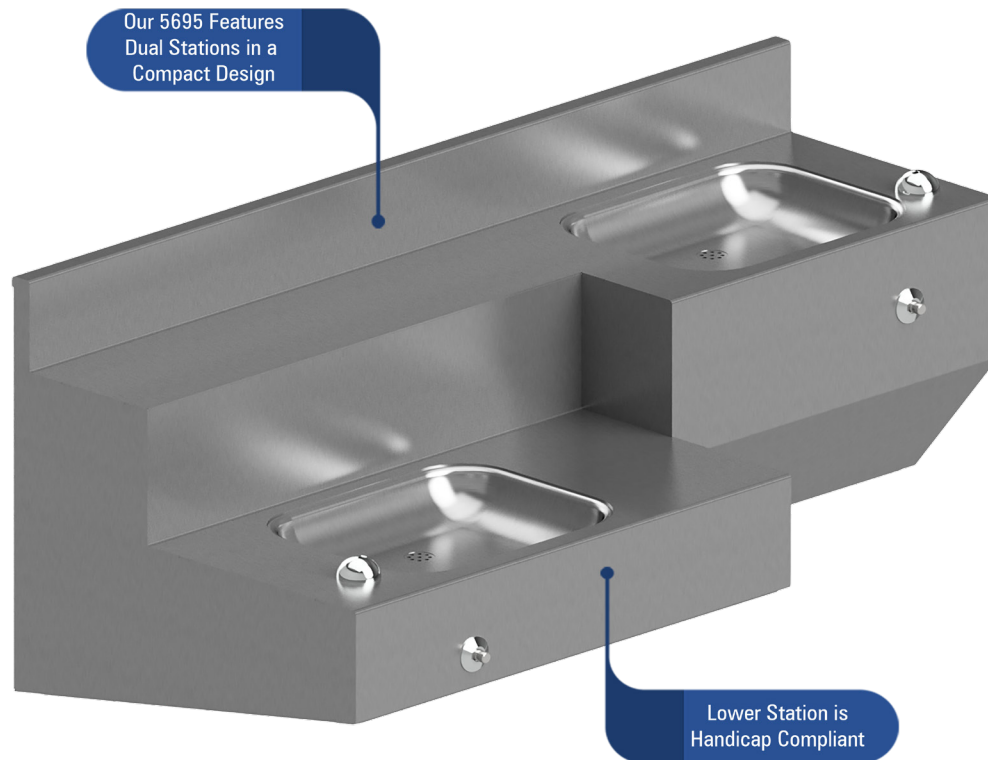
Trough Urinals

Our trough urinal fixtures include these standard features.

- *Multiple Lengths Options:* Our array of standard models makes it easy to find a perfect length for your facility.
 - 36"
 - 48"
 - 60"
 - 72"
 - 96"
- *Enclosed Trap Enclosure:* This standard feature is a secure closure for your waste trap for areas prone to vandalism.
- *14-Gauge Construction:* Our urinals are designed using 14-gauge stainless steel to provide a heavy duty, long lasting solution for your restroom facilities.



Metcraft Park & Rec. Products



Product Description

Our commercial drinking fountains feature a large basin with standard models ranging from one or two stations. While other options on the market are usually constructed of light gauge metal, our drinking fountains are manufactured using 14-gauge stainless steel to provide a heavy duty, long lasting solution for your facilities. If desired, we can provide a powder coat finish on all models, combining the durability of stainless steel with the traditional appearance of vitreous china.

Available Models

Drinking Fountain Single Station

- 5190
- 5191
- 5690
- 5691

Drinking Fountain Dual Stations

- 5695 (Shown)

Drinking Fountains

Standard Features and Options:

- *Pneumatic Valves:* Our drinking fountains are operated using a push button that activates a pneumatic valve. This design requires no power, making these a great fit for areas without access to power.
- *Enclosed Trap Enclosure:* This standard feature is a secure closure for your waste trap for areas prone to vandalism.



Metcraft Park & Rec. Products



Sloped Backsplash
for a Sleek Appearance

Heavy Duty 14 Gauge
Stainless Steel

Product Description

Our lavatory fixtures feature a stamped sink for a compact and sleek design. While other options on the market are usually constructed of light gauge metal, our sinks are manufactured using 14-gauge stainless steel to provide a heavy duty, long lasting solution for your restroom facilities. If desired, we can provide a powder coat finish on all models, combining the durability of stainless steel with the traditional appearance of vitreous china.

Available Models

Front Mounted Sinks

- 5680-HA
- 5683-CF (Shown)
- 5684
- 5685

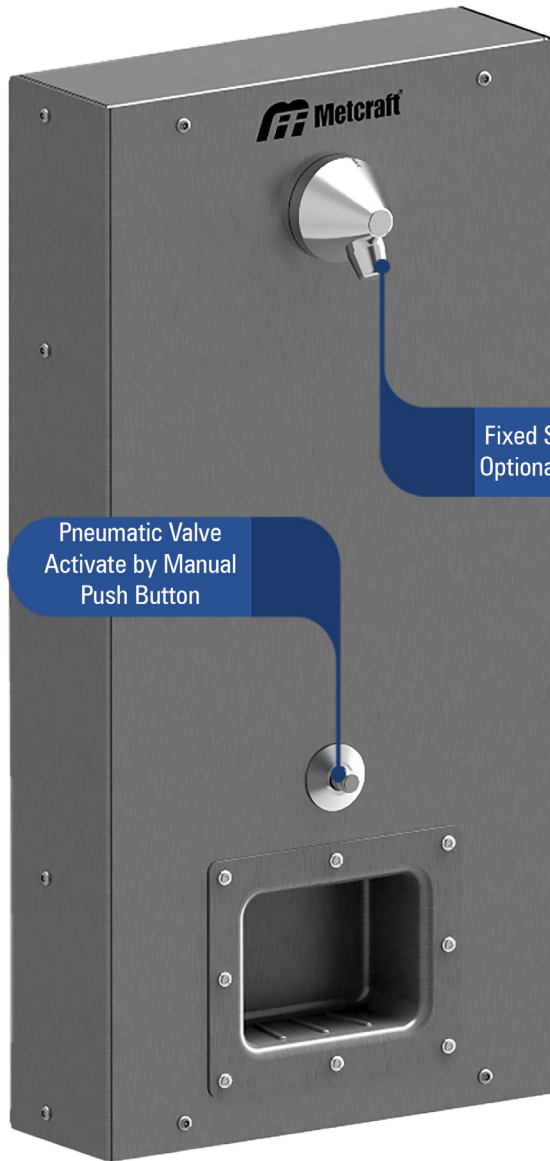
Hand Wash Sinks

Standard Features and Options:

- *Handicap Compliant Design:* Both models are handicap compliant when installed according to local regulations.
- *Waste Cover (Optional):* On the 5683-CF, 5684 & 5685 we offer an optional waste cover, to protect users from touching supply or waste lines that could be hot to the touch.
- *Trap Cover:* On the 5680-HA, we include a full trap cover which makes these units suitable for areas prone to vandalism.



Metcraft Park & Rec. Products



Fixed Showerhead w/
Optional Hand Showers

Pneumatic Valve
Activate by Manual
Push Button



Product Description

Our surface mounted shower panels feature a removable panel that attaches to a stainless steel frame that is secured to the surface of your wall. These panels are manufactured using 16-gauge stainless steel.

Available Models

We offer both standard and handicap compliant versions of our surface mounted showers.

Standard Models

- 700-SHS
- 702-SHC
- 722-SHS
- 723-SHS
- 710 Series

Handicap Models

- 700-SHS-HC
- 702-SHC-HC

Shower Panels

Standard Features and Options:

- *Showerhead Options:* We offer several different showerhead options with both fixed head and adjustable head options available. You also have the choice of the water volume you want from high flow 2.5 GPM options to WaterSense certified flow rates
- *Pneumatic Valves:* Our showers are operated using a push button that activates a pneumatic valve. This design requires no power, making these a great fit for areas without access to power.



Metcraft

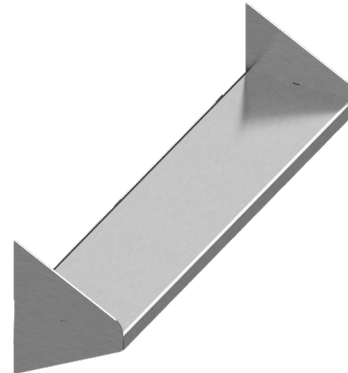
Commercial Parts and Accessories



Toilet Paper Holders

Available Models:

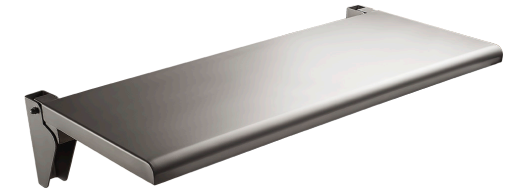
- A720
- A721
- A721-1
- A722
- A722-1
- A723



Recessed Shelves

Available Models:

- A810
- A811



Shower Seat

Available Models:

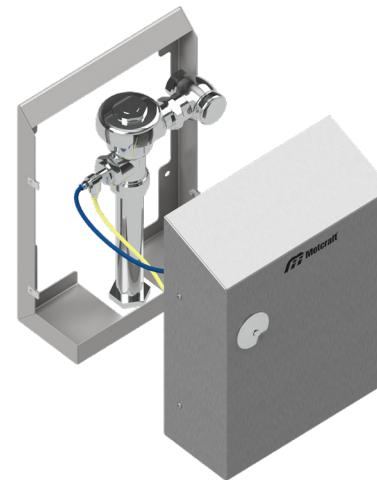
- A517



Mirrors

Available Models:

- A752 (12.5" x 16")
- A753 (12.5" x 24")
- A754 (9.5" x 11.25")
- A755 (11.25" x 17.25")
- A756 (11.25" x 23.5")
- A757 (Custom)



Flush Valve Enclosures

Available Models:

- A615
- A620