



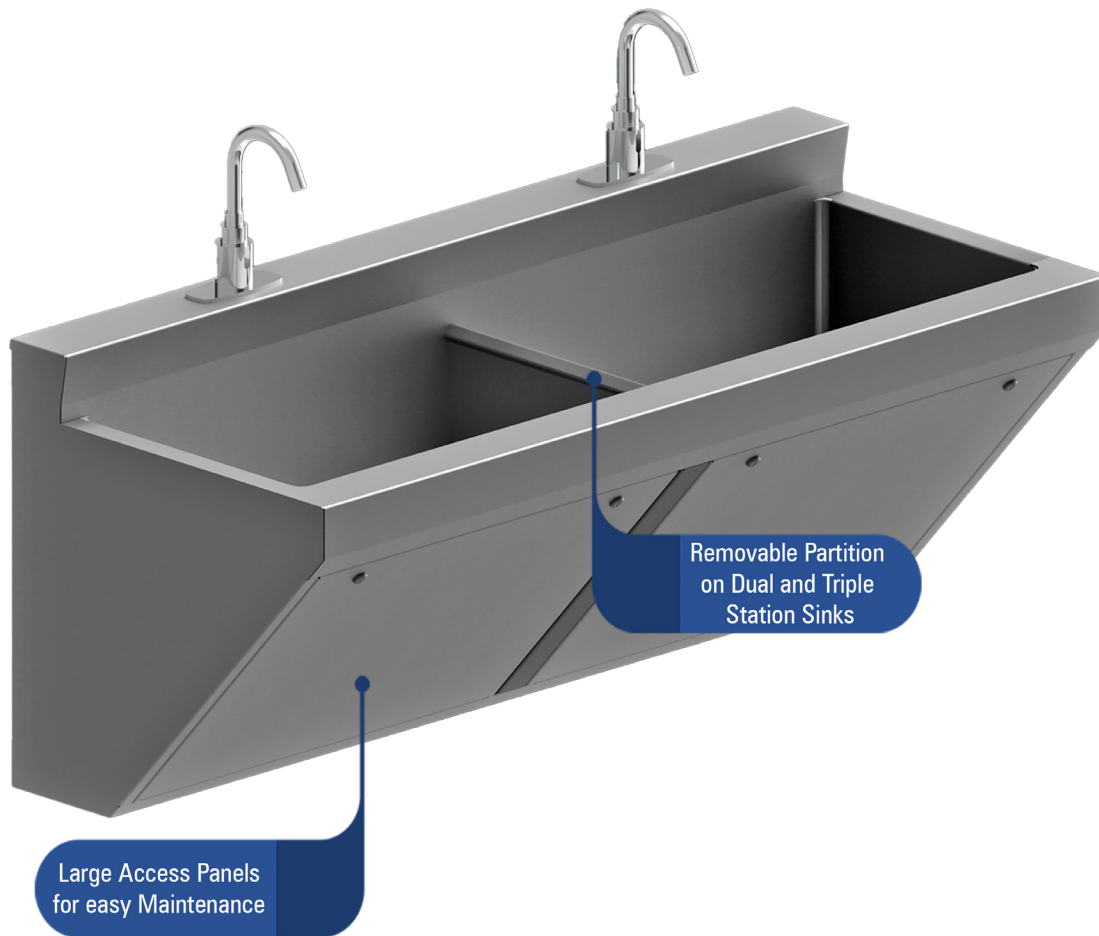
# Metcraft<sup>®</sup>

Industries, Inc.



**Hospital & Health  
Care Products**

# Metcraft Healthcare Products



## Product Description

Our surgeon scrub-up sinks are seamlessly welded to form a one-piece unit. Two and three station units feature a removable partition. The sink's front is sloped to minimize splashing and incorporates  $\frac{3}{4}$ " radius corners for easy cleaning. The drain hole accepts a 1  $\frac{1}{2}$ " drain and comes with a standard beehive strainer and p-trap. The unit can accommodate multiple different faucet punchings as well as punchings for soap dispensers.

## Available Models

### Single Station Sink

- 9111-1

### Dual Station Sink

- 9211-1

### Triple Station Sink

- 9311-1

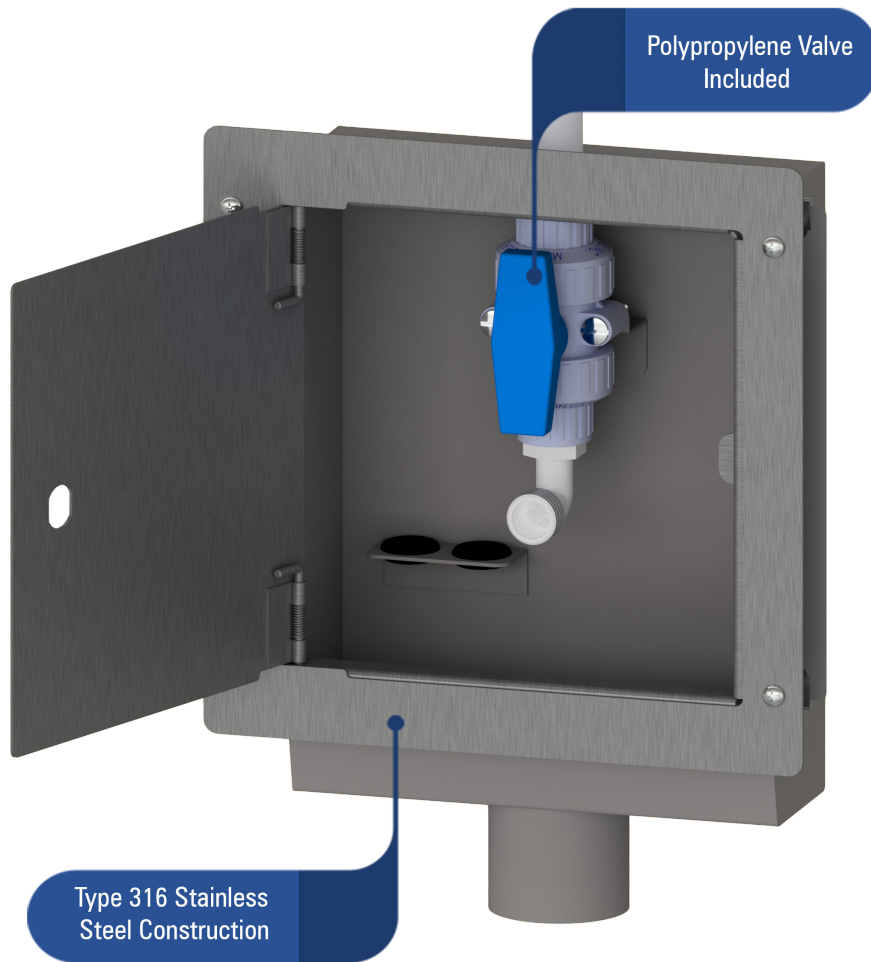
## Scrub Sinks

### Standard Features and Options:

- *Front Access Panels:* Large removable panels allow for easy maintenance.
- *Removable Partition:* The removable partitions help to prevent splashing between stations.
- *Sloped Front:* The front of the basin is sloped which helps minimize splashback from the sink back to the user.



# Metcraft Healthcare Products



## Product Description

Our dialysis box models are fully recessed stainless steel boxes designed with type 316 stainless steel for use with dialysis machines which utilize solutions that aggressively attack common steel, brass, iron and standard stainless steel. All box seams are continuously welded to form a one piece unit. Interior of the box is bead blasted for a clean surface.

## Available Models

### Single Valve Models

- A660 - Without Door
- A662 - With Door (Shown)

### Dual Valve Models

- A661 - Without Door
- A663 - With Door

Additional Models Available  
On Our Website

## Dialysis Boxes

### Standard Features and Options:

- *Type 316 Stainless Steel:* These units are constructed using type 316 stainless steel for enhanced corrosion resistance over standard stainless steel.
- *Hose Bracket:* These units are designed with a welded hose bracket that will hold two discharge hoses.
- *Adjustable Mounting Bracket:* The front frame features an adjustable depth which allows the unit to be mounted on a range of wall thicknesses.



# Metcraft Healthcare Products



## Product Description

Our Bariatric lavatory counter is a commercial grade lavatory used where a Bariatric application is necessary. The unit is seamlessly welded to form a one-piece unit except for the 18 gauge drop in sink bowl. The unit has a removable front panel for easy mounting and maintenance of the unit. The unit's frame goes completely to the floor to transfer the weight to the floor. The unit is capable of supporting 1,000 pounds when mounted properly.

## Available Models

### Bariatric Lavatory Counter

- 6111-BAR

## Bariatric Lavatory Counters

### Standard Features and Options:

- *Water Retaining Edge:* This fixture features an edge to prevent spills from going onto the floor, helping to prevent a potential slip by a patient.
- *Full Waste Enclosure:* The full waste enclosure keeps all plumbing hidden away, keeping the unit both safe for patients and improving the aesthetics of your restroom.
- *Heavy Duty Mounting:* This sink mounts along the wall, to the floor and is supported by a "Z" hanger clip. The stability of the extended enclosure and the multi-point mount options work to withstand load-bearing force in a wide range of applications.



# Metcraft Healthcare Products



Specialty Toilet Seat  
rated for 1200 Lbs.

Widened Base for  
Increased Support



Certified by  
QAI Laboratories



## Product Description

Engineered specifically for Bariatric applications, this line of robust toilet fixtures are constructed from 14-gauge, type 304 stainless steel. Internal components are crafted from stainless steel to ensure reliability and corrosion resistance.

## Available Models

### Wall Outlet Waste Models

- HET4635-BAR
- HET4680-BAR
- HET4685-BAR

### Floor Outlet Waste Models

- HET4650-BAR
- HET4655-BAR
- HET4658-BAR

Additional Models Available  
On Our Website

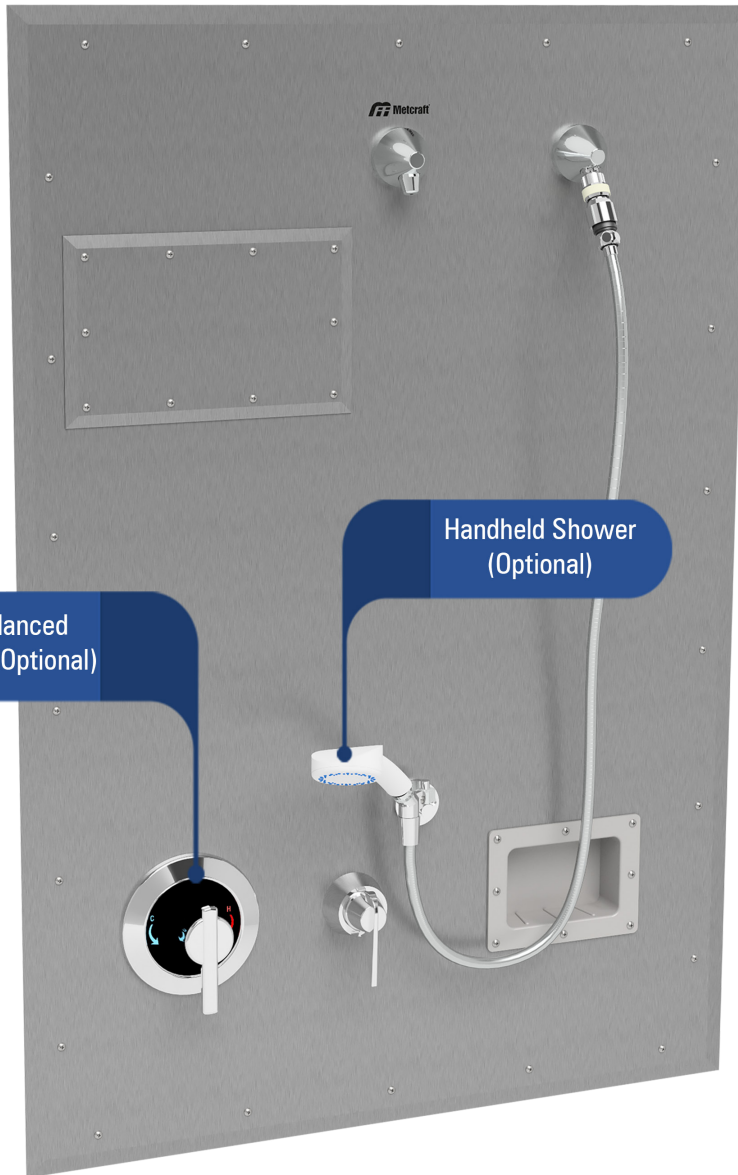
## Bariatric Toilets

### Standard Features and Options:

- *Hinged Seat:* These toilets come standard with a specialty hinged seat rated for 1200 pound loads.
- *Powder Coat (Optional):* This option combines the quality design and durability of our fixture with a powder coat finish to give the more traditional appearance of vitreous china.



# Metcraft Healthcare Products



## Product Description

This front mounted Shower Panel is designed for areas without an accessible pipe chase. The panel is fabricated using heavy gauge type 304 stainless steel. Exposed surfaces are polished to a satin finish. The panel is secured to a stainless steel recessed wall frame using stainless steel vandal resistant screws. Valve connections are made to supply piping with flexible supply hoses before the panel is mounted to the wall frame

## Available Models

### Shower Panels

- 8650L-HA (Shown)
- 8650R-HA

Additional Models Available  
On Our Website

## Shower Panels

### Standard Features and Options:

- *Multiple Showerhead Options:* Our shower panels have the option for fixed showerheads at two different angles, adjustable showerheads and a hand shower option.
- *Multiple Valve Options:* We also offer multiple valve options with pneumatic valves that are activated by a push button as well as multiple mixing valve options.
- *Powder Coat (Optional):* This option combines the quality design and durability of our fixture with a powder coat finish to give the more traditional appearance of vitreous china.



# Metcraft Healthcare Products



Fully Sealed Pivot Usable Along the Full Range of Motion

1/2" Thick Stainless Steel Mounting Plate



## Product Description

The stainless steel toilet assembly is highly sanitary and easy to clean. The heavy duty stainless steel construction throughout provides for a highly reliable unit requiring little maintenance. The toilet assembly incorporates a heavy duty, stainless steel pivot assembly that allows the toilet bowl to be concealed inside a cabinet when the toilet is not in use. The toilet can be flushed at any point along its pivotal arc.

## Available Models

### Wall Outlet Waste

- 9500

### Floor Outlet Waste

- 9505

## Pivot Assemblies

### Standard Features and Options:

- *Extreme Duty Pivot Assembly:* Our pivot assembly is engineered to withstand 2500 pounds of static load with no permanent damage and can be flushed at any position within its range of motion.
- *Mounting Plate:* Our pivot assemblies also feature a 1/2" thick mounting plate made from stainless steel that provides extreme durability to prevent distortion, even under heavy loads.





# Metcraft

## Healthcare Parts and Accessories



### Grab Bars

#### Available Models:

- A540 (Two Wall)
- A550 (Single Wall - 24" Long)
- A551 (Single Wall - 36" Long)
- A552 (Single Wall - 42" Long)
- A553 (Single Wall - 48" Long)
- A554 (Single Wall - 18" Long)



### Master Gas Valve Boxes

#### Available Models:

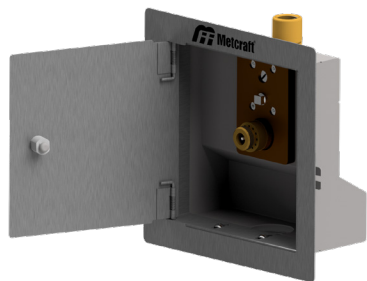
- A605 (Recessed)
- A605-SM (Surface Mounted)
- A605 (Recessed w/ Window)
- A605-SM (Surface Mounted w/ Window)



### Shower Seat

#### Available Models:

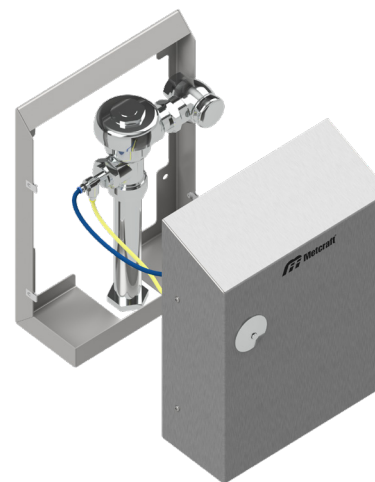
- A517
- A517-LR-L
- A517-LR-R



### Hose Boxes

#### Available Models:

- A630 (Single Valve, No Door)
- A631 (Double Valve, No Door)
- A632 (Single Valve, w/ Door)
- A633 (Double Valve, w/ Door)



### Flush Valve Enclosures

#### Available Models:

- A615
- A620